

Beacon Hill Station Access and Mobility Study



Our mission, vision, and core values

Mission: deliver a high-quality transportation system for Seattle

Vision: connected people, places, and products

Committed to **5 core values** to create a city that is:

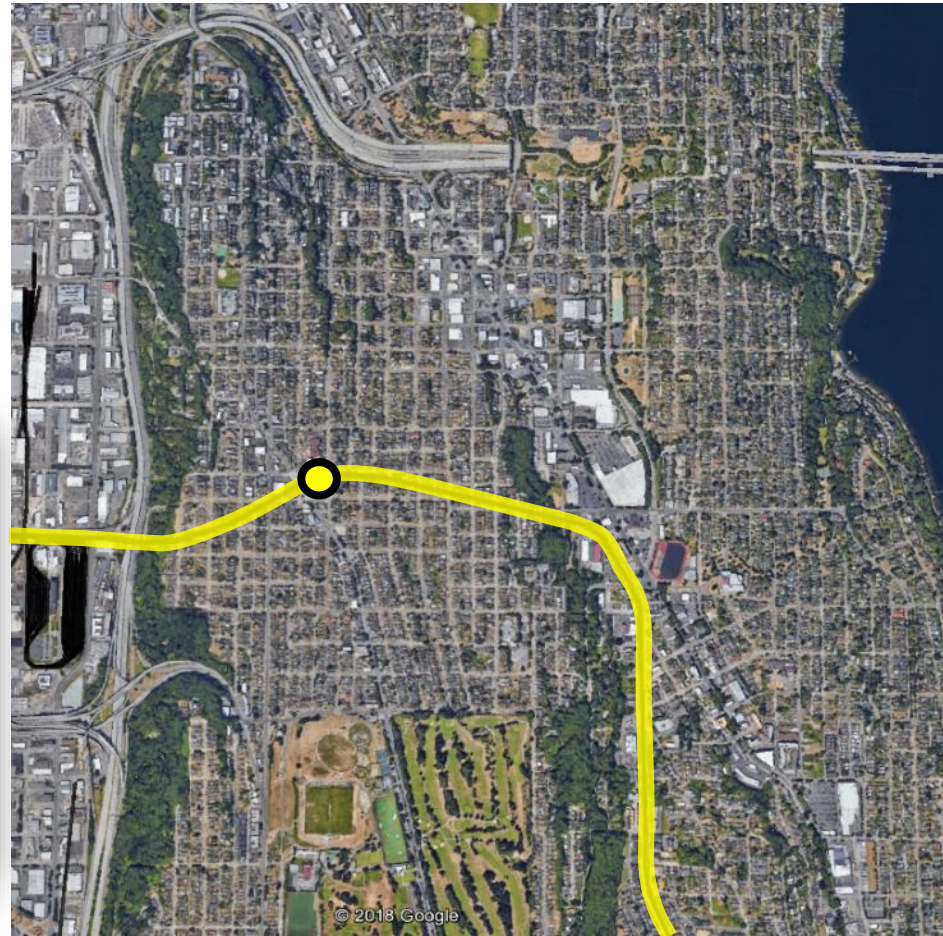
- Safe
- Interconnected
- Affordable
- Vibrant
- Innovative

For **all**

Presentation overview

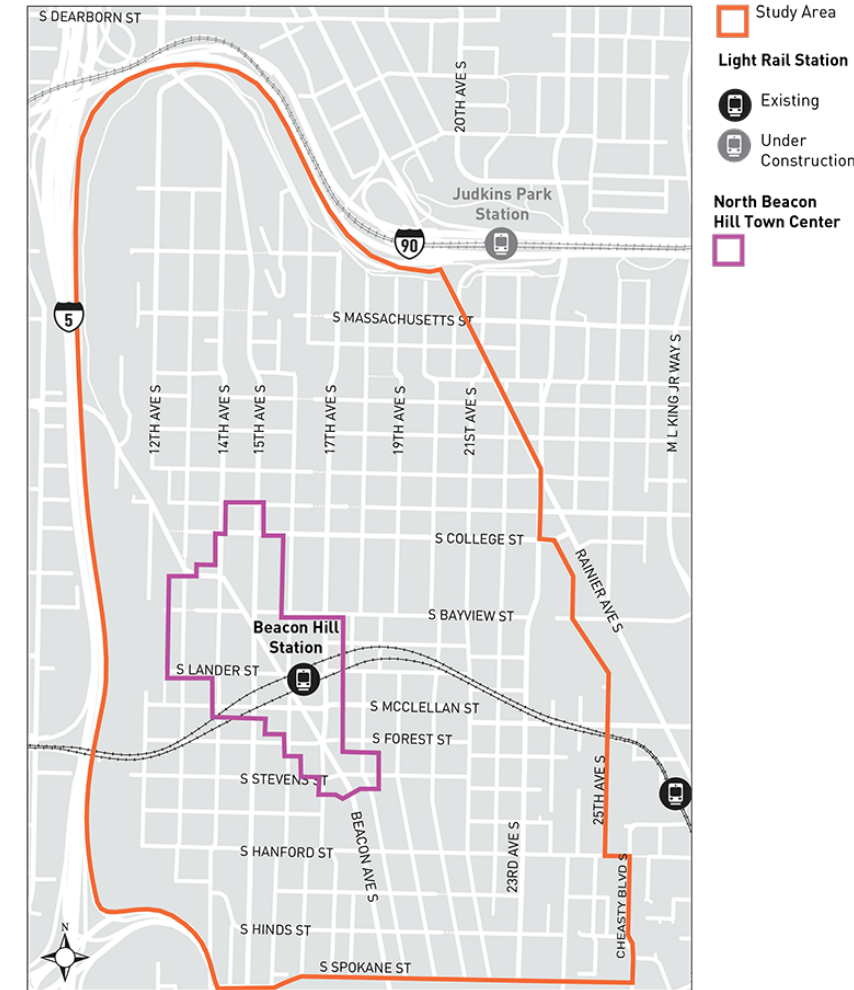
- North Beacon Hill Neighborhood
- What is the Beacon Hill Station Access & Mobility Study?
- Outreach
 - Who & How?
 - “What We Heard” HIGHLIGHTS
- What’s “new”?
- Key Project
 - Light Rail Station BLOCK Safety & Access Improvements

North Beacon Hill neighborhood



Station Access & Mobility Study

- Build on and coordinate with past/current planning efforts
- Identify station access and neighborhood mobility issues with the community
- Propose improvements and identify data needed prior to final design
- Empower the community with tools and resources



Outreach: Who & How?

- Advisory Group
- Online and paper surveys in English and seven other languages
- Beacon Hill Fest booth
- Targeted community meetings





Beacon Towers tenant meeting



Roberto Maestas tenant meeting



Community Liaisons

Franklin High School



International Drop-in Center



The Station -
Neighborhood Coffeeshop

Outreach: "What we heard" HIGHLIGHTS

- Strong support for improving safety and access to transit
- Equity is also a priority
- Beacon Ave S & S Lander St intersection and the block in front of Beacon Hill Station are areas of top concern
- Public safety, affordability of transportation options, language barriers to information

What's "new"?

- Documents a wider range of community's transportation needs
- Urban design guidelines for private development adjacent to transit stations/stops
- Strategies around implementation





Key Projects:

Light Rail Station BLOCK Safety & Access Improvements

**Beacon Ave S/S Forest St/17th Ave S Intersection
Improvements**

Beacon Ave S/S Stevens St Intersection Improvements

Questions?

chisaki.muraki-valdovinos@seattle.gov | (206) 615-1405

www.seattle.gov/transportation/projects-and-programs/programs/transportation-planning

www.seattle.gov/transportation

